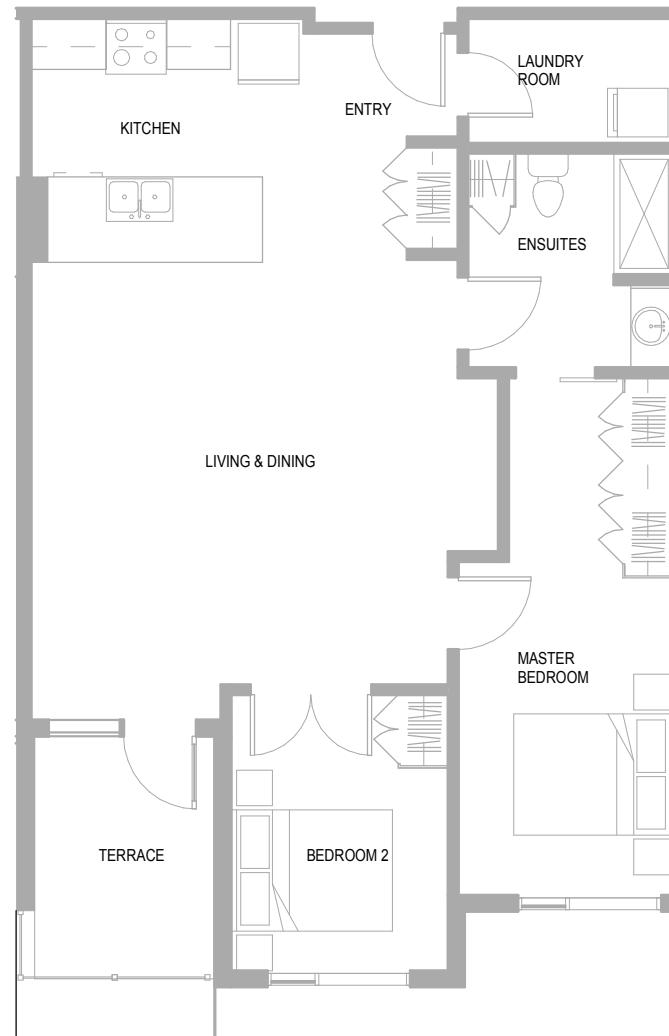




THE VILLAGE AT STONEBRIDGE



SUITE C1

TWO BEDROOM 1001 sq. ft.
TERRACE 75 sq. ft.

LIVING / DINING	- 17'- 2" X 17'- 5"
KITCHEN	- 11'- 2" X 10'- 0"
MASTER BEDROOM	- 8'- 11" X 13'- 11"
BEDROOM 2	- 8'- 11" X 11'- 4"

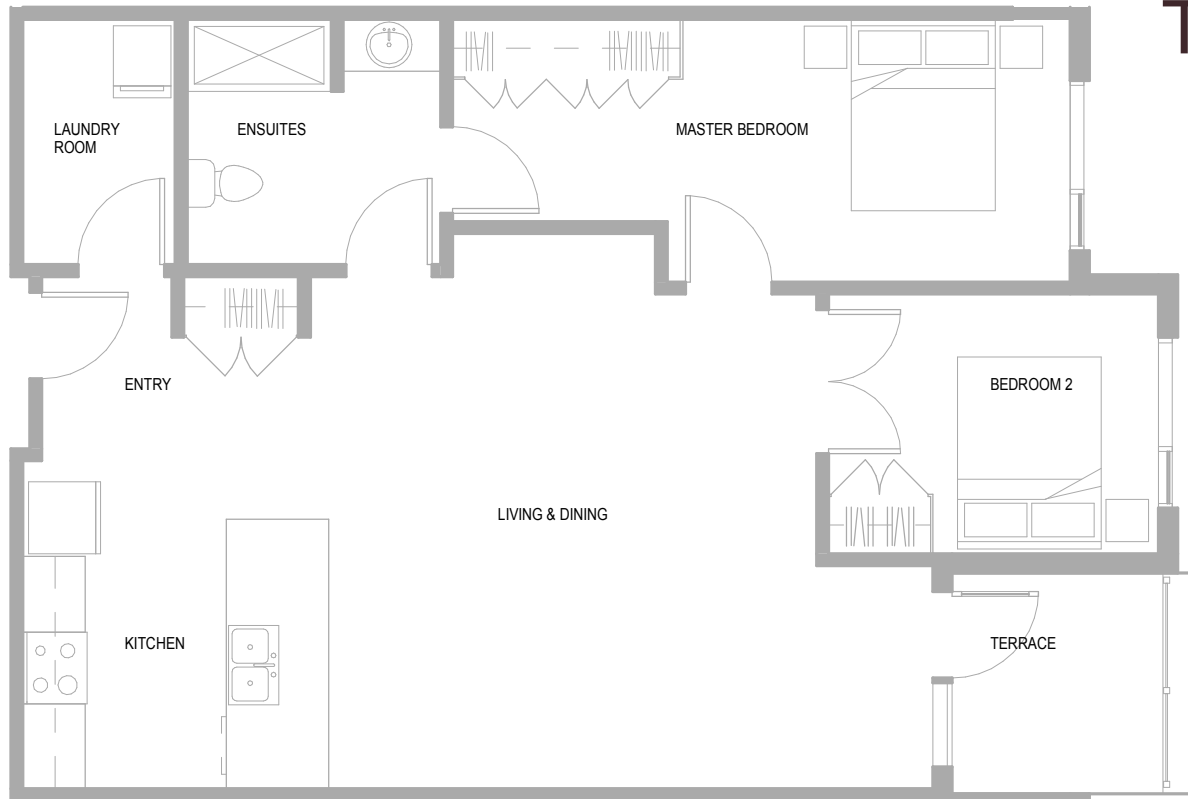
Note: In some instances where this suite type occurs on the second floor, there are two steps leading up to the terrace from the interior. Terraces with this occurrence are finished with deck tiles.

Note the Developer reserves the right to make reasonable alterations to the plans, and reasonable substitutions to the specifications included herein, provided that such alterations and substitutions comply with the National Building Code. All dimensions and square footages are approximate and all will be confirmed by legal land survey.





THE VILLAGE AT STONEBRIDGE



SUITE C2

TWO BEDROOM 1023 sq. ft.
TERRACE 56 sq. ft.

LIVING / DINING	- 16'- 11" X 17'- 2"
KITCHEN	- 10'- 7" X 11'- 4"
MASTER BEDROOM	- 13'- 5" X 9'- 11"
BEDROOM 2	- 11'- 5" X 9'- 0"

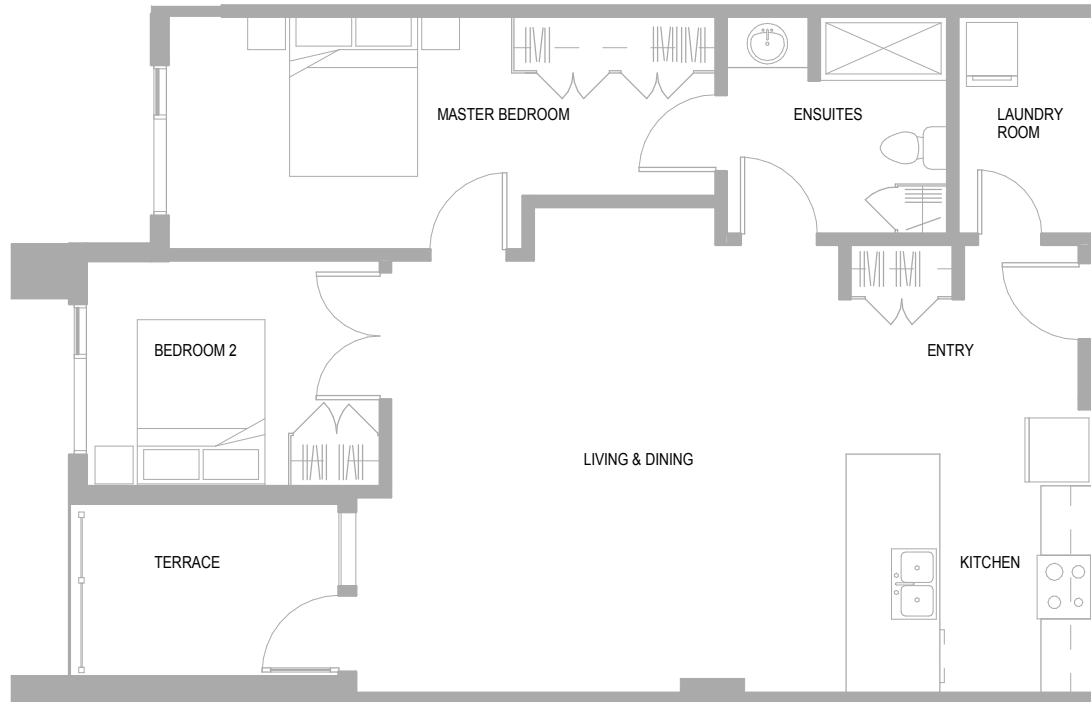
Note the Developer reserves the right to make reasonable alterations to the plans, and reasonable substitutions to the specifications included herein, provided that such alterations and substitutions comply with the National Building Code. All dimensions and square footages are approximate and all will be confirmed by legal land survey.



Note: In some instances where this suite type occurs on the second floor, there are two steps leading up to the terrace from the interior. Terraces with this occurrence are finished with deck tiles.



THE VILLAGE AT STONEBRIDGE



SUITE C3

TWO BEDROOM 1001 sq. ft.
TERRACE 62 sq. ft.

LIVING / DINING	- 17'-9" X 16'-11"
KITCHEN	- 9'-8" X 9'-4"
MASTER BEDROOM	- 13'-5" X 9'-11"
BEDROOM 2	- 11'-5" X 8'-10"

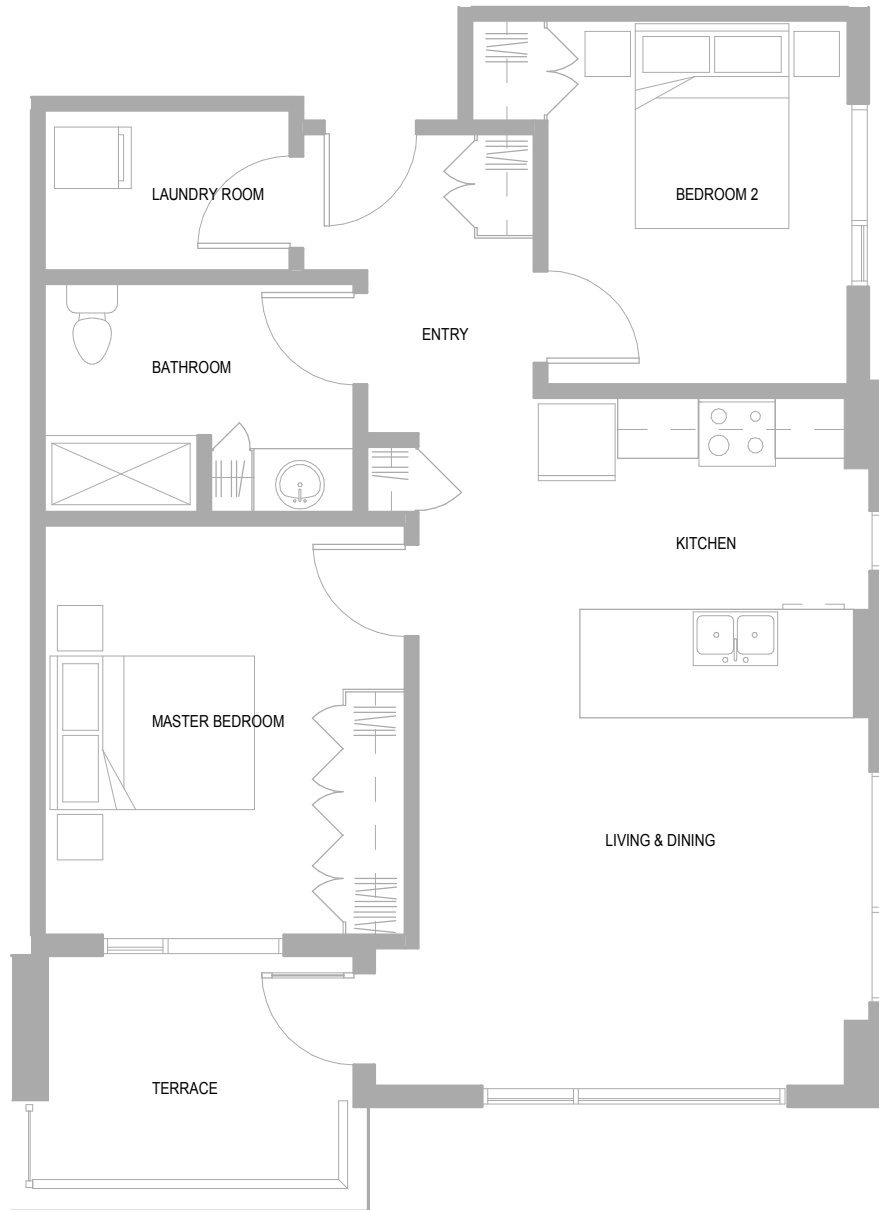
Note the Developer reserves the right to make reasonable alterations to the plans, and reasonable substitutions to the specifications included herein, provided that such alterations and substitutions comply with the National Building Code. All dimensions and square footages are approximate and all will be confirmed by legal land survey.



Note: In some instances where this suite type occurs on the second floor, there are two steps leading up to the terrace from the interior. Terraces with this occurrence are finished with deck tiles.



THE VILLAGE AT STONEBRIDGE



SUITE E1

TWO BEDROOM 893 sq. ft.
TERRACE 76 sq. ft.

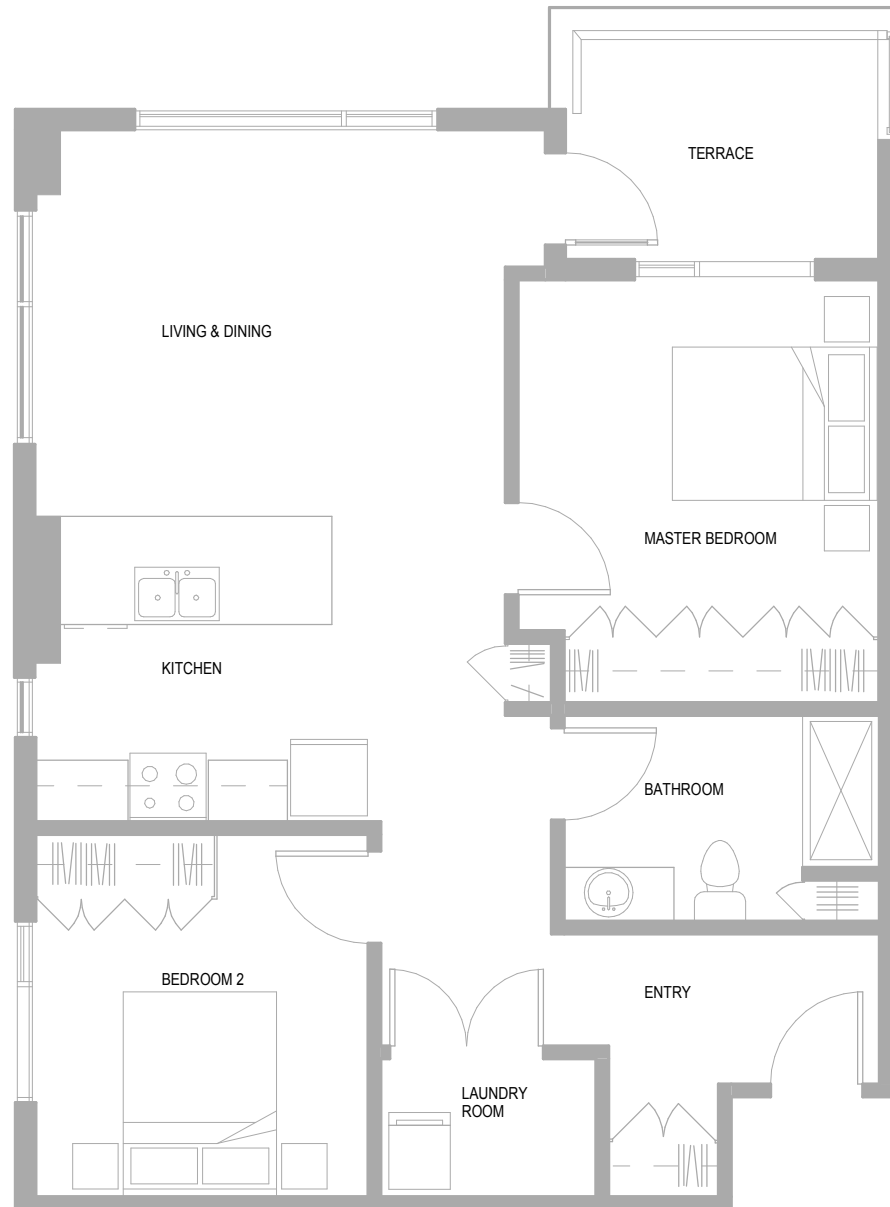
LIVING / DINING	- 14'- 8" X 12'- 0"
KITCHEN	- 10'- 11" X 10'- 5"
MASTER BEDROOM	- 13'- 4" X 11'- 9"
BEDROOM 2	- 9'- 9" X 11'- 10"

Note the Developer reserves the right to make reasonable alterations to the plans, and reasonable substitutions to the specifications included herein, provided that such alterations and substitutions comply with the National Building Code. All dimensions and square footages are approximate and all will be confirmed by legal land survey.





THE VILLAGE AT STONEBRIDGE



SUITE E2

TWO BEDROOM 936 sq. ft.
TERRACE 78 sq. ft.

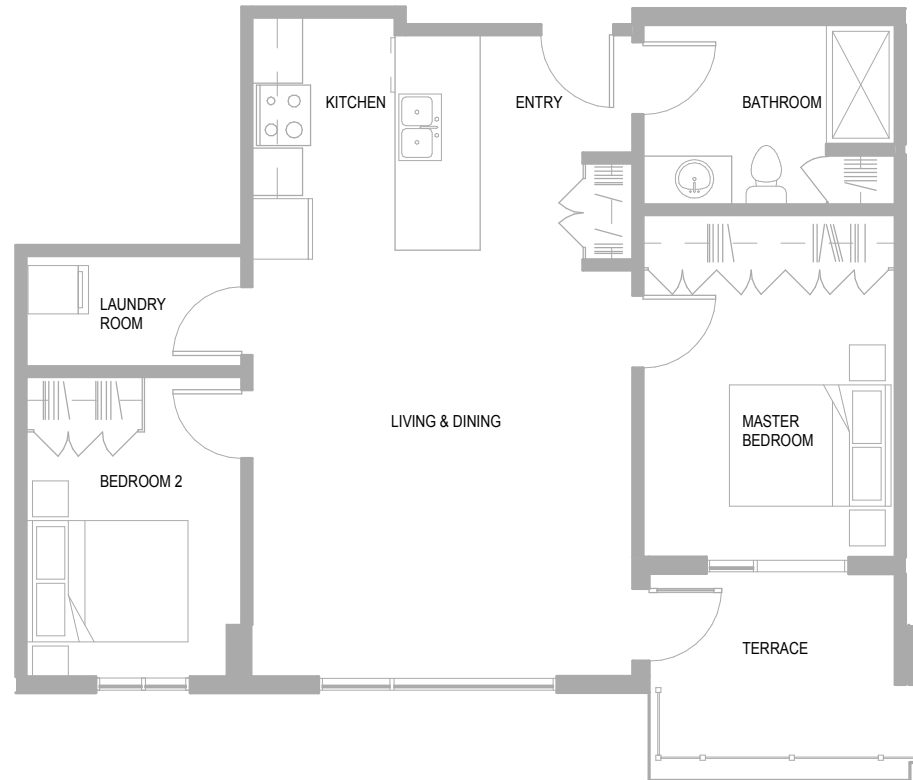
LIVING / DINING	-15'- 3" X 12'- 8"
KITCHEN	- 11'- 2" X 9'- 11"
MASTER BEDROOM	- 11'- 9" X 13'- 9"
BEDROOM 2	- 10'- 9" X 11'- 9"

Note the Developer reserves the right to make reasonable alterations to the plans, and reasonable substitutions to the specifications included herein, provided that such alterations and substitutions comply with the National Building Code. All dimensions and square footages are approximate and all will be confirmed by legal land survey.





THE VILLAGE AT STONEBRIDGE



SUITE N

TWO BEDROOM 926 sq. ft.
TERRACE 76 sq. ft.

LIVING / DINING	- 15'- 8" X 16'- 9"
KITCHEN	- 9'- 4" X 9'- 11"
MASTER BEDROOM	- 10'- 4" X 14'- 1"
BEDROOM 2	- 8'- 10" X 12'- 4"

Note: In some instances where this suite type occurs on the second floor, there are two steps leading up to the terrace from the interior. Terraces with this occurrence are finished with deck tiles.

Note the Developer reserves the right to make reasonable alterations to the plans, and reasonable substitutions to the specifications included herein, provided that such alterations and substitutions comply with the National Building Code. All dimensions and square footages are approximate and all will be confirmed by legal land survey.

