



THE VILLAGE

AT STONEBRIDGE



SUITE D

TWO BEDROOM 1206 sq. ft.
TERRACE 78 sq. ft.

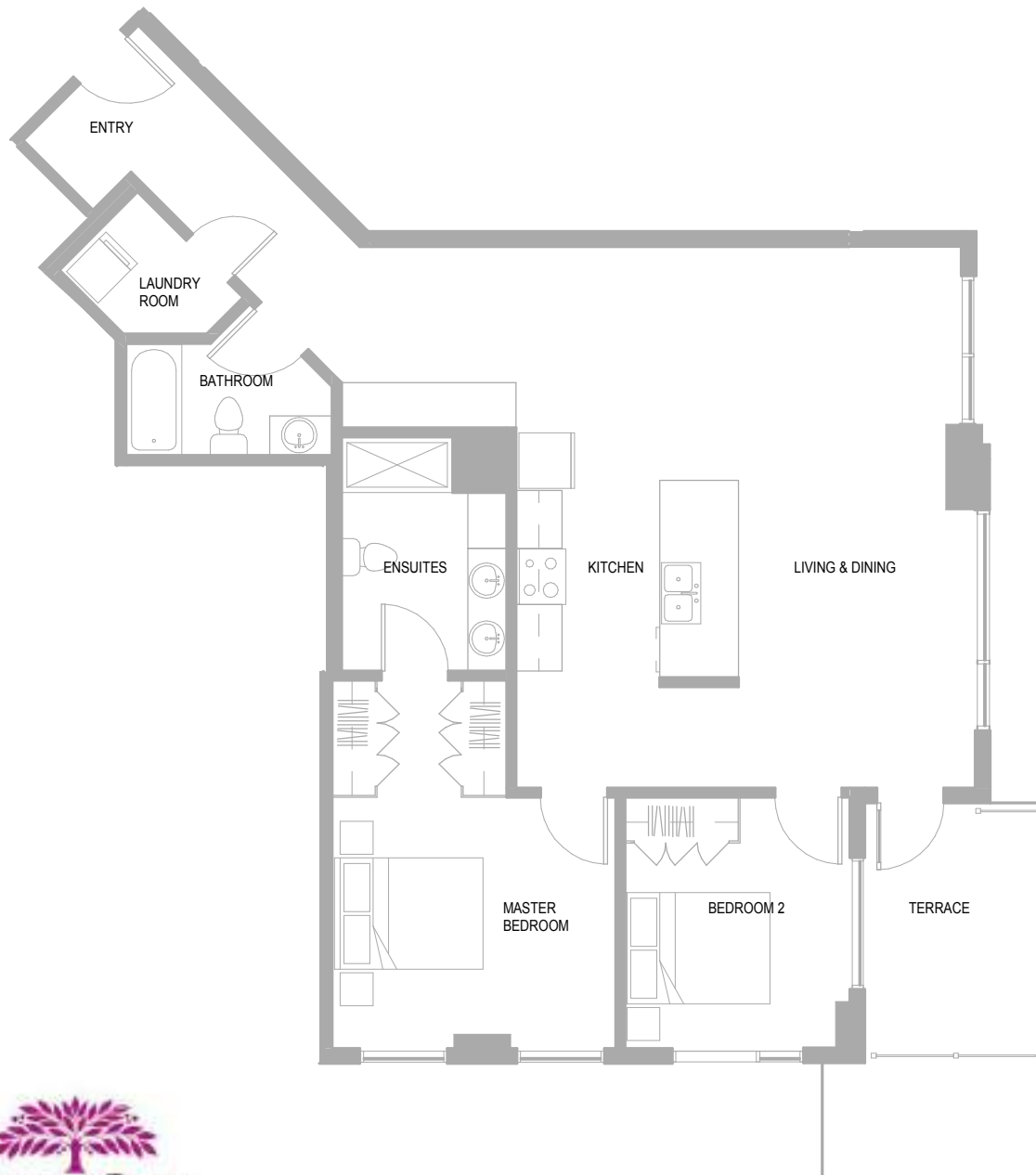
LIVING / DINING	- 9'- 8" X 23'- 0"
KITCHEN	- 9'- 11" X 11'- 0"
MASTER BEDROOM	- 12'- 8" X 11'- 2"
BEDROOM 2	- 10'- 1" X 11'- 2"

Note the Developer reserves the right to make reasonable alterations to the plans, and reasonable substitutions to the specifications included herein, provided that such alterations and substitutions comply with the National Building Code. All dimensions and square footages are approximate and all will be confirmed by legal land survey.





THE VILLAGE AT STONEBRIDGE



SUITE D2

TWO BEDROOM 1216 sq. ft.
TERRACE 99 sq. ft.

LIVING / DINING	- 10'-8" X 19'-4"
KITCHEN	- 9'-11" X 10'-11"
MASTER BEDROOM	- 12'-8" X 11'-3"
BEDROOM 2	- 10'-1" X 11'-3"

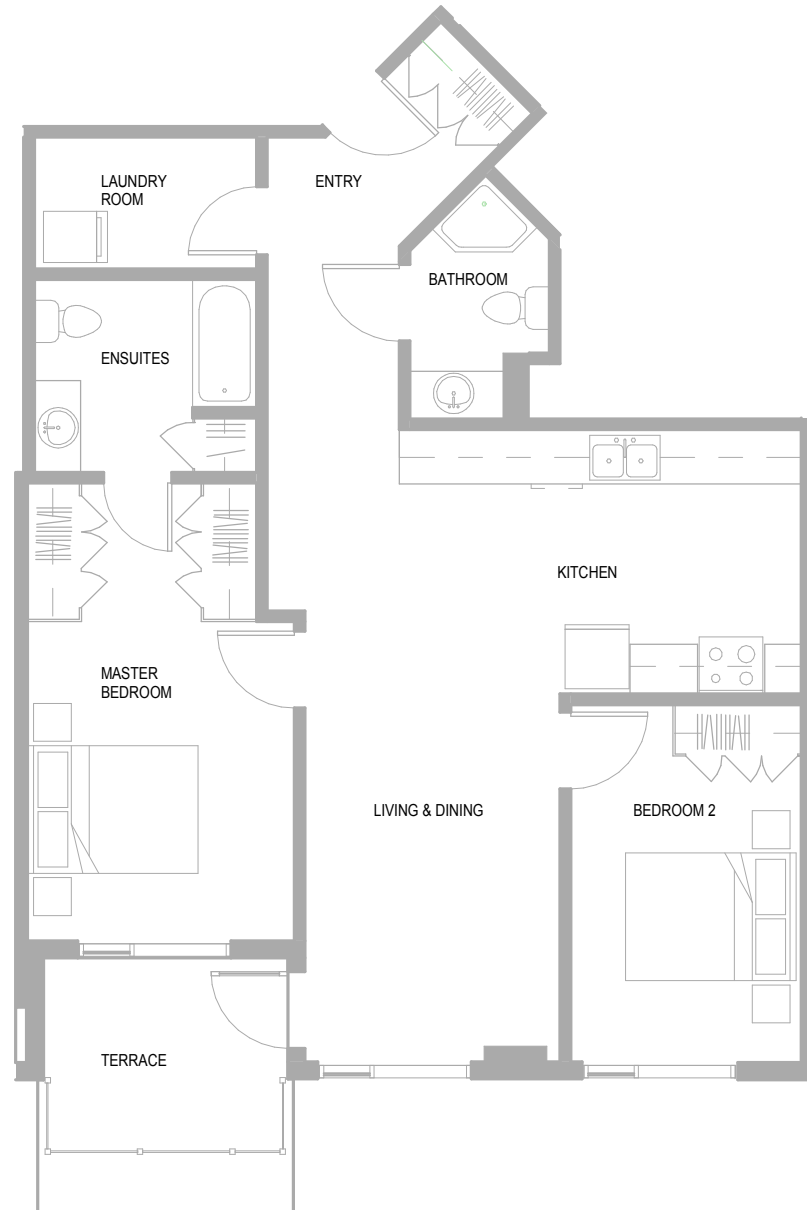
Note: In some instances where this suite type occurs on the second floor, there are two steps leading up to the terrace from the interior. Terraces with this occurrence are finished with deck tiles.

Note the Developer reserves the right to make reasonable alterations to the plans, and reasonable substitutions to the specifications included herein, provided that such alterations and substitutions comply with the National Building Code. All dimensions and square footages are approximate and all will be confirmed by legal land survey.





THE VILLAGE AT STONEBRIDGE



SUITE I1

TWO BEDROOM 1001 sq. ft.
TERRACE 75 sq. ft.

LIVING / DINING	- 9'- 11" X 14'- 4"
KITCHEN	- 15'- 8" X 10'- 4"
MASTER BEDROOM	- 10'- 5" X 12'- 5"
BEDROOM 2	- 9'- 3" X 11'- 11"

Note: In some instances where this suite type occurs on the second floor, there are two steps leading up to the terrace from the interior. Terraces with this occurrence are finished with deck tiles.

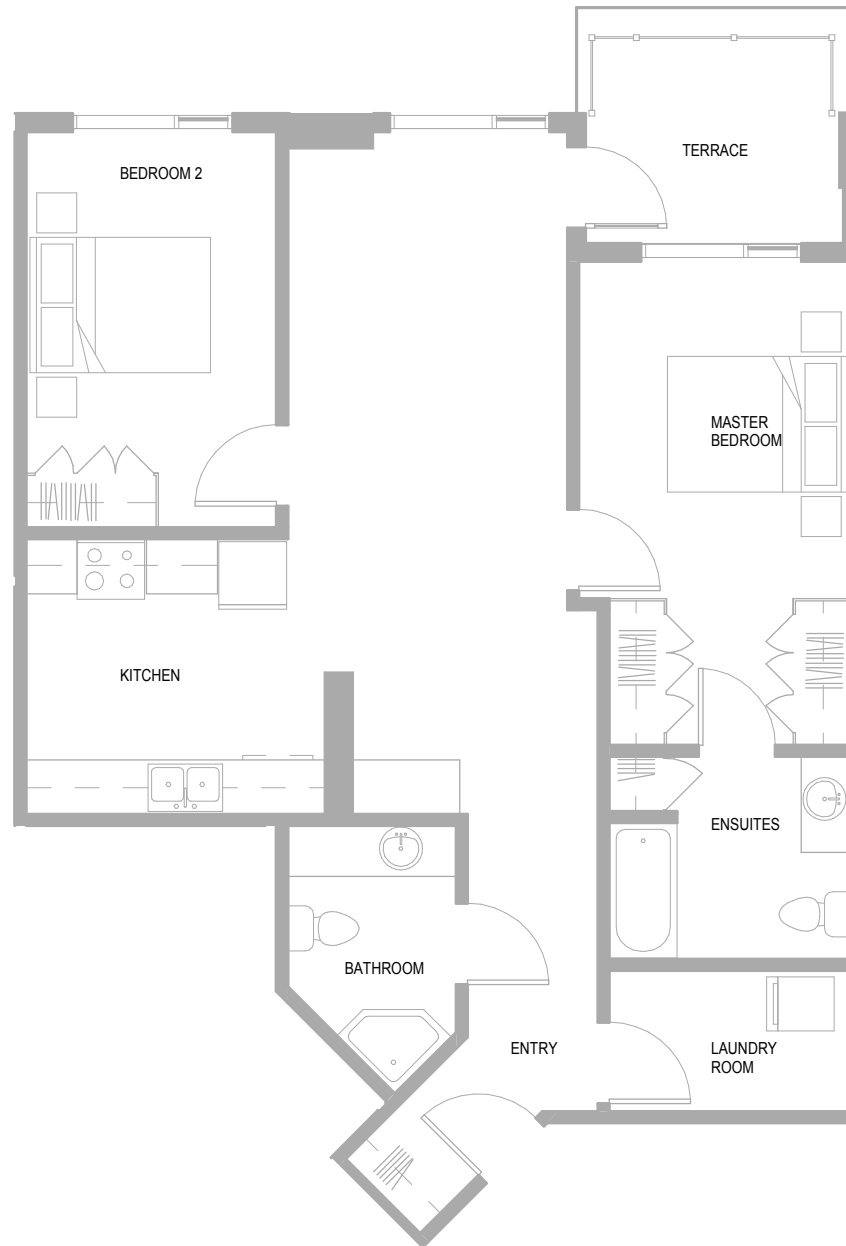
Note the Developer reserves the right to make reasonable alterations to the plans, and reasonable substitutions to the specifications included herein, provided that such alterations and substitutions comply with the National Building Code. All dimensions and square footages are approximate and all will be confirmed by legal land survey.





THE VILLAGE

AT STONEBRIDGE



SUITE 12

TWO BEDROOM 1012 sq. ft.
TERRACE 74 sq. ft.

LIVING / DINING	- 10'- 3" X 17'- 7"
KITCHEN	- 10'- 11" X 10'- 1"
MASTER BEDROOM	- 10'- 0" X 12'- 5"
BEDROOM 2	- 9'- 2" X 12'- 8"

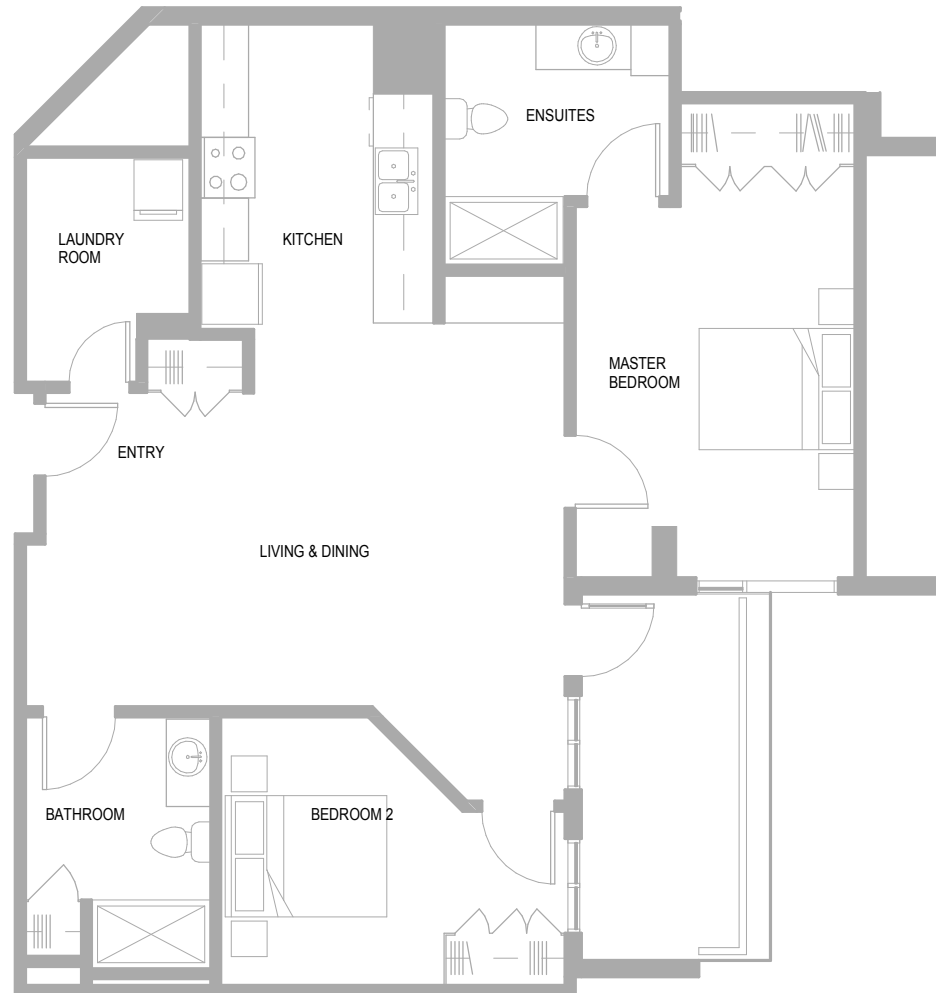
Note: In some instances where this suite type occurs on the second floor, there are two steps leading up to the terrace from the interior. Terraces with this occurrence are finished with deck tiles.

Note the Developer reserves the right to make reasonable alterations to the plans, and reasonable substitutions to the specifications included herein, provided that such alterations and substitutions comply with the National Building Code. All dimensions and square footages are approximate and all will be confirmed by legal land survey.





THE VILLAGE AT STONEBRIDGE



SUITE M

TWO BEDROOM 1066 sq. ft.
TERRACE 118 sq. ft.

LIVING / DINING	- 21'- 5" X 15'- 9"
KITCHEN	- 9'- 7" X 12'- 8"
MASTER BEDROOM	- 11'- 6" X 15'- 3"
BEDROOM 2	- 9'- 2" X 11'- 0"

Note the Developer reserves the right to make reasonable alterations to the plans, and reasonable substitutions to the specifications included herein, provided that such alterations and substitutions comply with the National Building Code. All dimensions and square footages are approximate and all will be confirmed by legal land survey.

